

STUDENT GUIDE [2017-2018]

WELCOME !



GO !

www.univ-nantes.fr/welcome



UNIVERSITÉ DE NANTES

[EDITORIAL]



Dear students,

As a new academic year begins, all of us at Université de Nantes are pleased to welcome students already accepted and especially those who have just received their high school diploma.

Every year, there are more than 38,000 students preparing one of our 357 degrees within one of our 20 components. Around 4,200 international students, representing a wide range of countries, will be joining us this year and we are pleased and proud to count

them as part of the University.

Pursuing a degree, whether in a university program, a technical or vocational field, always requires a strong personal investment. Whatever your goal may be, all of us at Université de Nantes are committed to helping you carry it out in the best conditions.

In implementing your project and in building your future, you also have the opportunity to get involved on campus. Yet again, we are devoted to supporting your initiatives and to guiding you in your projects.

We are proud to welcome 150 student associations from a wide variety of interests on our campuses. These associations promote expression, exchange and citizenship awareness among the student body and are all essential for the high standing of the University.

We are committed to enabling project planning, fulfilment of ambition, cultivation of differences and to connecting talents.

I hope you have an exciting year, full of audacity, creativity and success and I pledge a strong and unfailing support from our University.

Olivier Laboux

President of Université de Nantes

[CONTENTS]

- . 3 WELCOME
- . 13 GETTING STARTED
- . 25 STUDY
- . 35 SUCCEED
- . 49 STUDENT LIFE
- . 67 GLOSSARY



U **NN**
NN
NN
NN

EQUAL OPPORTUNITIES

[WELCOME]

- **4** **UNIVERSITÉ DE NANTES:
UNIQUE AND NEW**
- **7** **TO BE A STUDENT,
TO BE A CITIZEN**
- **10** **THE GOVERNANCE OF
UNIVERSITÉ DE NANTES**
- **67** **GLOSSARY**

UNIVERSITÉ DE NANTES: UNIQUE AND NEW

UN!

UNIQUE AND NEW

A major research center in Western France,

Université de Nantes has never stopped moving forward. In the last 50 years, Université de Nantes has taken training and research to the highest level and **has become part of the Top 20 French Universities ranked in the Times Higher Education**. Facing a rapidly changing world, **Université de Nantes invents a new model of university**. This model places the student at its centre and, more than ever, the human being at the heart of its ambitions.

Rooted in Nantes – a city renowned for its vitality, culture, economic development and its quality of life – Université de Nantes radiates also thanks to its 2 campuses in **Saint-Nazaire** and **La-Roche-sur-Yon**.



1 OUT OF 12 NANTES RESIDENTS WORKS OR STUDIES AT UNIVERSITÉ DE NANTES

iN!

OPEN AND CITIZEN-MINDED

Université de Nantes actively participates in the city.

With 38,000 students (including **4,200 foreign students**) and **3,730 staff, 50% of which is dedicated to research, 1 out of 12 Nantes residents works or studies at Université de Nantes**. True cultural, sports and society contributor, our university also encourages the revitalization of its region by enriching public debate and by stimulating creativity: conferences, up to date media equipment, artists-in-residence programs, high-level sports, student commitment through 150 student organisations.

Within its campuses, different disciplines meet to enrich one another. Within 20 faculties and schools, 295 specialities are represented and 64 laboratories work in all fields of knowledge.

UNIVERSITÉ DE NANTES: UNIQUE AND NEW

ON!

CREATIVE AND AUDACIOUS

Dynamic, combative, creative and united,

Université de Nantes enjoys the major assets needed to encourage local, national and international cooperation and to **make interdisciplinary a factor of innovation and success**. It contributes to the innovation of the socioeconomic make-up thanks to its researchers, laboratories, equipment, state-of-the-art technological platforms as well as **its recent graduates, who represent an outstanding talent pool**.

The Université de Nantes is involved in the education development in order to make it evolve according to its students needs.

THE WORLD UNIVERSITY RANKINGS

1ST FRENCH UNIVERSITY ON YouTube twitter

10,500 GRADUATES +90% OF BACHELORS AND MASTERS DEGREES FIND A STEADY JOB

150 ASSOCIATIONS | 101 FINANCIALLY SUPPORTED STUDENT PROJECTS

46 PARTNER INSTITUTIONS IN THE WORLD IN 5 CONTINENTS

50 MONTHLY EVENTS OPEN TO ALL | 4 FESTIVALS OF FOREIGN UNIVERSITY CINEMA

UNIVERSITÉ DE NANTES: UNIQUE AND NEW

Bird's eye view of our campuses

Université de Nantes invites you to rise above its campuses.

360° bird's eye view visit on:
<http://360.univ-nantes.fr>

Each aerial picture has been enhanced with marks of the main places of interest. Those will give you access to presentations of the buildings, pictures and videos.



TO BE A STUDENT, TO BE A CITIZEN

Université de Nantes has adopted a strategy for quality assurance and sustainable development in 2014.

867 tons

Between 729 and 867 tons of waste are collected in a year at the university.

49 Gwh

This is the university annual consumption of energy (all kind of energy). This is equivalent to a 120 000 inhabitants city.

Aware of the societal challenges, the university acts on its energetic consumption and for its waste management. You can participate in this collective effort with simple and common sense eco-friendly actions.

Energy Saving Actions:

- Switch off your lap-top and its screen after having used it in the computer rooms of the university
- Mark the websites you visit frequently as favorite (this divides up to 4 times the emission of greenhouse gases)
- Always turn off the light when you leave a room, no matter for how long you leave
- Always close the windows when you leave a room
- Always close the main doors of the buildings, especially during winter time
- Print only if necessary (1 out of 6 printed document is never read)

Management of the waste

We thank you for separating your recyclables respecting the recycling system of your building.

We encourage you to use the garbage for can or cup when available.

A question, a project ?

dqdd@univ-nantes.fr

For more information : www.univ-nantes.fr/qualite-developpement-durable



Hotel for insects - CNEN of Nantes

TO BE A STUDENT, TO BE A CITIZEN

Students Elections

You will have to vote for the renewal of the student's representatives of the university councils and of your faculty council.

Student's representatives are elected for a 2-year mandate.

All information will be sent to you on your student mailbox : firstname.lastname@etu.univ-nantes.fr and on your intranet.

136 elected students

represent you in all University authorities.



University elections provide an excellent **moment of democracy learning**: participating in elections contributes to the acquisition of the civic values of the university.

You can **become an active member of the university by participating in the governing body** in charge of its management. The elected students get a particular status which allows them to continue their studies during their mandate.

For more information, visit your **INTRANET** > *Engagement et initiatives étudiantes*

Your Student Representatives

Students are elected in your faculty, school or institute. Main decisions regarding academic affairs, research and student life are taken in these councils.

Students elected to the University Councils

- **6** students to the **Board of Regents**
- **4** doctorate students to the **Research Commission**
- **16** students to the **Commission of Academics and University Life**
- **6** students to the **International Relations Council**

TO BE A STUDENT, TO BE A CITIZEN



Coline Prieur-Delage, 20
Vice-President of the Student Body, in charge of Student Life

Elected representative at the Academics and University Life Commission, Coline is full of diplomacy and proactivity.

«My goal is to guarantee the student an academic success and well-being, by helping him/her to find a healthy balance in his/her daily life. This is why I make sure that the student life is a real priority for the University»

Here are her goals :

- Questioning the student services functioning in order to provide the best services
- Developing the sense of belonging of Université de Nantes' students, on the different campuses (Nantes, Saint-Nazaire, La Roche S/ Yon), by re-creating a strong bond between them.
- Strengthening good and deep relations with the local partners regarding student life, especially with the local authorities and the CROUS.

vpve@univ-nantes.fr

The mandate of this two-person team will end in April 2018, after two years of involvement. As they are students, members of the Presidential team and members of the University governance at the same time, Coline and Leevan both ensure that students are always at the heart of the University projects.

Close and attentive to students, Coline and Leevan are your most suitable interlocutors.



Leevan Thiebault, 23
Counsellor for University Life

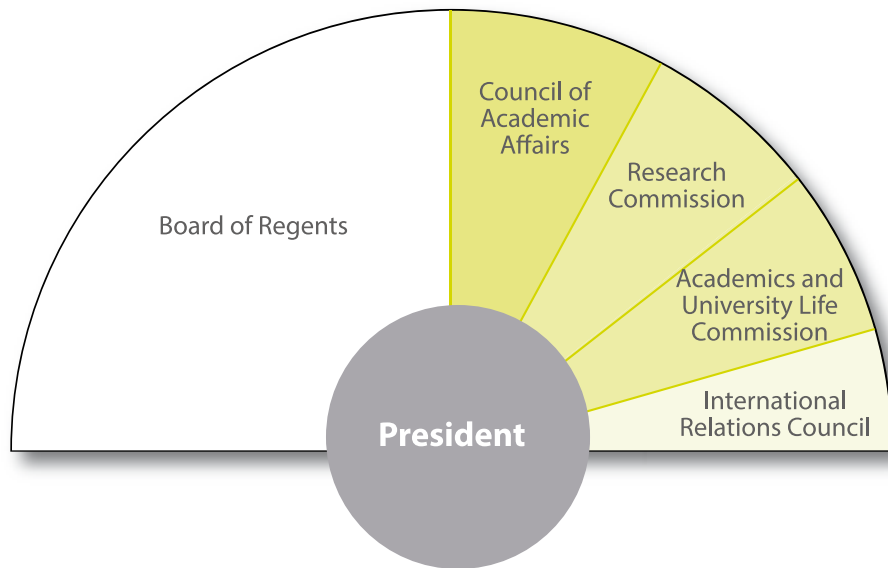
Nonimated by the President of the University, Leevan is known for his frankness and also to be as bearded as volunteer.

« My role is to ensure that the various tools linked with education and student life are easily and rightly implemented to guarantee a good and free use by the students (as the gap year for example!) »

For the second year of his mandate, his plan is to introduce a volunteering manager status at the Université de Nantes in order to highlight the students' experience and skills, acquired throughout their volunteering and civic commitments, in their academic and professional achievements.

conseiller.qe@univ-nantes.fr

THE GOVERNANCE OF UNIVERSITÉ DE NANTES



The elected members

The elected members come from the whole university community and represent professors, administrative and technical staff (BIATSS) and the student body.

External members are also represented in the University Councils.

The elected members are involved in the democratic life of the institution and collectively make decisions about the University.

THE GOVERNANCE OF UNIVERSITÉ DE NANTES

Two levels of decision making exist: an executive and a legislative level.

The executive branch

The University is headed by a president who is assisted by a committee (*bureau*) elected for 4 years by the Board of Regents. The committee is composed of the vice-presidents and advisors.

The legislative branch: the councils

The main decisions which guide the executive branch are taken by the councils and the commissions which are composed of professors, administrative and technical staff and students. They are divided in two levels:

- **The University level, the central level** (Board of Regents, Council of Academic Affairs, Research Commission, Academics and University Life Commission, International Relations Council)
- **The component level, the local level.**

Administration's Executive Management

The Administration's Executive Management coordinates and organizes all administrative, financial and technical services of the University.

These services are organized regarding two main missions:

- management and development
- support to academic activities.

These services implement the policy of the University under the authority of the General Director of the Services.

Faculties (also known as UFR), schools, institutes, departments, laboratories

The university consists of 20 components: 11 faculties and academic and research units (UFR), 6 institutes, 1 school for teacher training, 1 engineering school and 1 observatory of Earth and planetary sciences.

In general, these components consist of academic departments and research laboratories. They have their own management board.



[GETTING STARTED]

- . 14** WELCOME AND INFORMATION CENTER
- . 16** YOUR CERTIFICATE OF ENROLLMENT
- . 18** YOUR FIRST DAYS
- . 21** SPECIAL ACADEMIC ARRANGEMENTS
- . 22** PASS SUP', THE STUDENT CARD
- . 67** GLOSSARY

WELCOME AND INFORMATION CENTER

Guichet Unique - Foreign Students Welcome Center - the first stop for foreign students!

Where is the Guichet Unique?

At the Maison des Échanges Internationaux et de la Francophonie (MEIF), 15 chaussée de la Madeleine in Nantes

Tram 2 or 3 - stop Hôtel Dieu (map p. 70 n° 8)

Key Dates

- Semester 1: August 28th, 2017 to September, 29th, 2017
- Semester 2: January 8th, 2018 to February 2nd, 2018

Opening Hours

9am to 5pm, Monday to Friday



Welcome at the Guichet Unique

Guichet Unique Services

At the Guichet Unique, the international relations staff and student mentors will give you all the information you need to get settled in Nantes:

- **Administrative Formalities** for registering at the university and applying for your residence permit;
- **Accommodation information:** housing insurance and information on obtaining renters insurance and applying for a housing allowance from the Family Allowance Fund (CAF);
- **Health Insurance:** universal health insurance (*sécurité sociale*), supplementary health insurance, reimbursement rates, university health service: Student Health Center-SUMPPS (see p. 52);
- **French banks:** opening a bank account;
- **Student Jobs:** job search information and visa requirements;
- **Transportation Information:**
 - public transport services: Bus and tram (TAN), trains (SNCF),
 - bike rentals,
 - and everything you need to know about how to get around the city and the region;
- **Student Life:** entertainment, cultural activities and regional and international associations.

Contact:

guichet.unique@univ-nantes.fr
www.univ-nantes.fr/guichetunique

WELCOME AND INFORMATION CENTER

Do you want a buddy when you arrive in September?

Autour du Monde-ESN Nantes connects you for free with a local student buddy.

This intercultural relations and support group will help you meet new people and get settled in!

The International Relations Office

is located at the Maison des échanges internationaux et de la francophonie (MEIF), 15 chaussée de la Madeleine in Nantes.

Tram 2 or 3 - stop Hôtel Dieu (map p. 70 n° 8)

The Languages Center (SUL) offers 2 kinds of french certifications for international students (>p.45)

More information on:
www.univ-nantes.fr/fle

Autour du Monde – Erasmus Student Network (ESN)

The association Autour du Monde-ESN Nantes offers various activities and events all year long (buddy program, guided visits, polyglot cafés, parties...).

The association Autour du Monde-ESN Nantes helps you get settled in on your campus and in the city. Duty periods at the Student Center (Pôle étudiant - >p.56)

Contact:

esn.nantes@gmail.com
www.esn-nantes.org

Support throughout your stay

The staff at the International Relations Office will provide you with support and assistance throughout your stay in Nantes.

Contact:

international.accueil@univ-nantes.fr
More information on www.univ-nantes.fr/foreignstudent

French Language Courses

The Language Center offers French languages courses for all proficiency levels. More information on p. 45

YOUR CERTIFICATE OF ENROLLMENT

Keep your Registration Certificate safe.

Tuition Fees Description

RELEVÉ DES DROITS UNIVERSITAIRES

UNIVERSITÉ DE NANTES année universitaire < 2015-2016

INE : **09g9k100027**
 Nom : **DUPONT**
 Prénoms : **FRANÇOIS**
 Né(e) le : **JJ/MM/AAAA NANTES**
LOIRE-ATLANTIQUE

Droits perçus	
Sécurité sociale :	213,00
Droits d'inscription :	① Droits ② ③ ④
BU :	30,00
Méd. préventive :	4,57
Sport-Culture :	
Université :	30,20
Diplôme :	96,30
F.S.D.I.E. :	14,00
Total : 388,07 euros	

DOCUMENT À CONSERVER

CERTIFICAT DE SCOLARITÉ

UNIVERSITÉ DE NANTES année universitaire < 2015-2016

N° étudiant : **999001A**
 INE : **09g9k100027**
 Nom : **DUPONT**
 Prénoms : **FRANÇOIS**
 Né(e) le : **JJ/MM/AAAA NANTES**
LOIRE-ATLANTIQUE

Le directeur général des services certifie que l'étudiant(e) ci-dessus désigné(e) est régulièrement inscrit(e) pour l'année en cours :
 UFR ou INSTITUT : **IUT de NANTES**
 Discipline(s) préparé(e) :
DUT INFORMATIQUE AN : 1

LE DIRECTEUR GÉNÉRAL DES SERVICES
Thierry Bais

ACCÈS AUX SERVICES EN LIGNE

UNIVERSITÉ DE NANTES

Pour la durée de vos études, l'université de Nantes met à votre disposition un intranet étudiant incluant un accès à votre environnement électronique de travail.

Login : dupont-f* INE : **09g9k100027**

Pour découvrir le mot de passe

- Enlever l'étiquette au verso
- Gratter la zone
- Le mot de passe s'affiche au recto

Découvrez votre code au verso

francois.dupont@etu.univ-nantes.fr

Informations : <http://www.univ-nantes.fr/gordon>

MÉMORISEZ VOTRE MOT DE PASSE ET DÉTRUISEZ LE DOCUMENT.

CARTE D'ÉTUDIANT <2017-2018

UNIVERSITÉ DE NANTES

DUPONT FRANÇOIS
3 RUE DU MARÉCHAL JOFFRE
44000 NANTES

CERTIFICAT DE SCOLARITÉ

> DESTINÉ À LA SNCF

UNIVERSITÉ DE NANTES année universitaire < 2015-2016

INE : **09g9k100027**
 Nom : **DUPONT**
 Prénoms : **FRANÇOIS**
 Né(e) le : **JJ/MM/AAAA NANTES**
LOIRE-ATLANTIQUE

Le directeur général des services certifie que l'étudiant(e) ci-dessus désigné(e) est régulièrement inscrit(e) pour l'année en cours :
 UFR ou INSTITUT : **IUT de NANTES**
 Discipline(s) préparé(e) :
DUT INFORMATIQUE AN : 1

LE DIRECTEUR GÉNÉRAL DES SERVICES
Thierry Bais

SPECIMEN

Registration Certificate available for your administrative processes

Login access to your intranet and webservices

Password access to your intranet and webservices

Your Student Email Address valid as long as your are registered at the university

YOUR FIRST DAYS

Here are some tips, tools and information to help you have a successful academic year.

Your student card is valuable

Your Pass Sup' is your student ID card.

It proves that you are a student at Université de Nantes.

Personal, non-transferable and indispensable in your daily life.

Take care of it and carry it with you at all times! (see p. 22/23)

Change your INTRANET password

> Vos **WEBSERVICES** > **Mot de passe**



Institute of Economics and Management of Nantes - IAE

Read this “welcome” guide

You'll find everything you need to get started and to succeed.

Log into your intranet:

www.univ-nantes.fr/intranet

To log in, you will need:

- **your student card** (your login is the student number preceded by the letter “e”)



- **your password** on your registration certificate, issued with your student card, in the to-scratch part. (see p. 16).

Your academic information and web services are only available on your INTRANET (see p. 38).

By using the university's IT resources you agree to the **IT charter** given to you at registration.

Keep your Registration Certificate

The Registration Certificate is printed on the Enrollment Certificate you receive with your student card (see p.16-17). It will be useful for your administrative paperwork.

YOUR FIRST DAYS

Welcome Week

For the IUT, contact your registrar's office at www.univ-nantes.fr/scolarites

Your presence is mandatory.

An informative week where professors will explain the academic program, class schedules, testing, and grades. You will also have the opportunity to tour the school.

This is an ideal time to ask any questions you may have, familiarize yourself with the course content, tour the facilities and meet your teachers.

Welcome week calendar

www.univ-nantes.fr/calendrier

For questions, contact the secretariat of your Faculty, institute or school.

Learning agreement

You are part of an international exchange program? You have to choose all classes you want to attend and give your learning agreement duly signed to your administrative international coordinator by the following deadlines:

- 1st semester: October 13
- 2nd semester: February 16

Special academic arrangements

Special arrangements are available for working students, competitive athletes and students with disabilities (see p. 21)



YOUR FIRST DAYS

Cultural workshops

September 26th, 2017 from 6 pm to 8 pm at the Pôle Étudiant. Meet with the workshop coordinators.
*you can register until October 4th, subject to space availability.

The University Calendar (l'Agenda)

Available on campus and online. You will find all necessary information and dates for events organized on your campus. (see p. 55).



Certification in languages

Your language skills can be assessed by independent agencies. Certification is strongly recommended for international mobility and employability and in some cases it is required (engineering schools, teacher recruitment, study abroad applications). (See p. 43).

Culture and initiatives workshops

Interested in meeting with professionals from the culture scene on your campus? Experiment with artistic techniques? Exchange with fellow students in a convivial setting by working on a group project and seeing it through? Take part in one of the cultural and artistic workshops.

Registration begins: September 26th, 2017 on www.univ-nantes.fr/culture (see p. 56) at the Pôle Étudiant (map p. 71 n°11)

Cultural and associative activities

You have the opportunity to engage in cultural and associative activities throughout the year: theatre, exhibitions, concerts, festivals, community events, etc. (see pp. 55-57).

Sports activities

The university offers a wide variety of sports activities. The full list is available on: www.univ-nantes.fr/sport

Registration begins: September 4th, 2017, with no closing date. MANDATORY pre-registration on the intranet (see p. 58).

SPECIAL ACADEMIC ARRANGEMENTS

Competitive athletes

Université de Nantes offers certain adjustments (laptop loan, tutoring, special timetable arrangements) to allow competitive athletes to combine studies and sports in all academic fields.

Complete the application to get the competitive athlete status available on www.univ-nantes.fr/sport and return it to the SUAPS or by e-mail to:

Luc PILLOT*
luc.pillot@univ-nantes.fr

Your academic advisor, your competitive athlete advisor or Luc Pillot can advise you on the use of the specific academic arrangements. Don't forget to contact them.

Learn more about the special academic arrangements www.univ-nantes.fr/shn

* Olympic sailing champion at the 1988 Seoul Olympic Games

These arrangements will allow students to achieve these two goals:

- graduate within a specified time
- perform their sports at the highest level.

The competitive athlete student status is embedded on your Pass Sup' student ID chip, allowing access to the weight room sports facilities.

Students with disabilities or long-term illness

To consider the facilities you will need, your first step will be meeting the doctor at the Student Health Center-SUMPPS as soon as possible (take an appointment by e-mail to <http://univ-nantes.contact-sante.fr/RendezVous>).

This doctor will attest of your situation and can recommend arrangements according to your specific needs.

This support will be coordinated by the "Relais handicap" of the Student Health Center.

The "Relais handicap" supports your student life (access to course content, housing, sport, culture, study abroad) with its partners (Handisup association, the CROUS, etc.).

www.univ-nantes.fr/relaishandicap

This website is for students with disabilities, where you can download the form to inform us of your special needs.

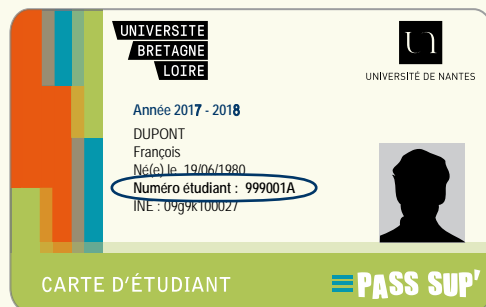
Contact:
+33 (0)2 40 37 10 35
relais.handicap@univ-nantes.fr

PASS Sup'

the student card

22

The Pass Sup' card is the student card at Université de Nantes. You can also use it to pay at the university restaurants.



This new electronic multiservice card serves you as your student ID. It is personal and non-transferable. This new card is fragile, take care of it and remember to carry it with you at all times.

You will have to show your Student Card to attend the exams.

With your Pass Sup' card you can:

- prove that you are a student at Université de Nantes
- pay for meals at any CROUS restaurant
- borrow books from the university library
- sign up for sports and fitness activities
- access certain controlled-access areas (parking lots, study rooms, etc.)
- print documents, in Libraries for instance.

More information on:

www.univ-nantes.fr/carteetudiante



www.ubl.fr



www.crous.fr

23

Questions?

Do I need to pay for my Pass Sup' card?

The Pass Sup' card is free. However if your card is lost or stolen, you will be charged 10 € for a new card [see below under [Assistance](#)].

How long is my Pass Sup' card valid?

Your Pass Sup' card is valid throughout your studies. A new sticker will be placed on your card at the beginning of each academic year.

How do I activate my card?

- Your card is already active and can be used for university services.
- To use it in the university restaurants, you have to activate your "wallet" (IZLY) on line by following the instructions that CROUS emailed to your university address firstname.name@etu.univ-nantes.fr. In this e-mail you will find your login and password to access your "wallet" on www.crous-nantes.fr.

Questions about the Pass Sup' online wallet?

How do I add credit to my Pass Sup' card?

- You can add credit on your online wallet from Internet (laptop, smartphone, digital tablet...), using your credit card or banking information, and accessing with the login and password you received from the CROUS on your student email address: www.izly.fr

- only if absolutely necessary, you can add credit by paying with cash at the counter of the university restaurant.

How do I pay for meals at the university restaurants with my Pass Sup' card?

- To pay for meals at the university restaurant, you must first add credit to your online "wallet" on www.izly.fr [see the previous question].
- At the university restaurants and cafeterias, you don't have to enter a pin number when you pay. Your card is directly debited by using the rates that apply to you.

What is the minimum credit I can load on my card?

5 €.

How can I get back the money that I put on my Pass Sup' card?

You can get your money back from your online "wallet" by using your login and password on www.izly.fr.

Assistance

My card is lost or has been stolen?

- If you think you lost (or if you've been robbed) your Izly card or your mobile phone or if you think that someone has stolen you Izly password, block your card and Izly account as soon as possible. You can do it from your online account on the Izly website, on the page «Mon profil».

- Ask for stopping all different uses than CROUS catering by sending and email to production-cms@univ-nantes.fr giving your first name, last name and birthdate.
- Report the lost or stolen card to the registrar's office
- You will be charged 10 € for a new card.

What can happen if someone else uses my card without my knowledge?

You must immediately block your card to prevent somebody else from using it. Université de Nantes and CROUS will not be held responsible for any misuses of your card.

My card doesn't work at the library, copy machines, to access buildings...

Please inform your registrar's office.

My card doesn't work at the university restaurants nor at the CROUS ATM machines.

Please notify the staff at the counter of your university restaurant.

I'm having trouble with my online "wallet" on the website www.izly.fr

Please notify the staff at the counter of your university restaurant.

I didn't find an answer to my questions.

Please go on www.u-bretagne Loire.fr or e-mail contact-cms@u-bretagne Loire.fr

[STUDY]

.26 ACADEMICS

.28 DIPLOMAS

.30 EXAMS

.32 KEY DATES

.67 GLOSSARY

ON!

ACCELERATING KNOWLEDGE

ACADEMICS

Université de Nantes offers academic paths leading to most degrees in higher education, in short or long study programs.

The LMD system

As part of the harmonization of European higher education, the university study programs are organized around three degrees:

- License (L)
- Master (M)
- Doctorate (D).

The admission in masters' degrees is selective.

Do not forget to apply on www.univ-nantes.fr/candidature-master



Université de Nantes is a major research centre in Western France. 64 laboratories work in all areas.

Classes are taught by professors who include the latest research achievements in their teaching.

LMD system: License, Master, Doctorate

The advantages of this system include:

- recognition and equivalence Europe-wide
- student mobility
- better recognition of the degrees on the labour market
- the intermediate degrees Deug, DUT (bac +2) and Maîtrise (bac +4) continue to be issued.

Organization of studies

Semester system

- The license is divided into 6 semesters
- The master is organized in 4 semesters

Credits can be accumulated and transferred

Each semester is assigned 30 credits or ECTS (European Credit Transfer System), common to many European countries:

- license, 6 semesters validated = 180 credits
 - master, 4 semesters validated = 300 credits
- Holders of a master can prepare a doctoral thesis which corresponds to 480 credits, or 180 additional credits after the master.

ACADEMICS

How do I contact a teacher?

- Go to the secretariat of your faculty, UFR, institute or school (or department) to get your teacher's contact details or office hours.
- Consult the directory on the mobile app: m.univ-nantes.fr



Annuaire

- or on the home page of the university website.



If you want to change programs during your first year of License:

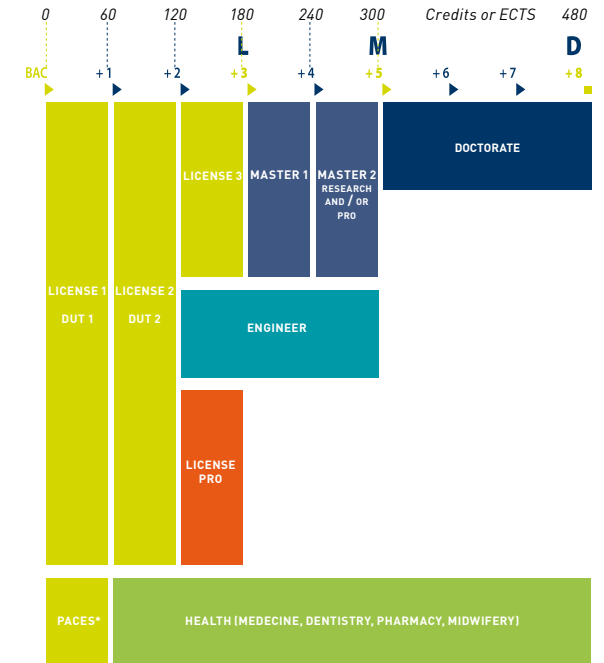
You can do so at the end of the first semester. Check with the Registration Office of your Faculty, Institute or School where you want to enrol.

Find the UFR contact information on www.univ-nantes.fr/scolarites

Course Unit system (Unités d'Enseignement - UE)

The system consists of course units. Each UE has a value defined in ECTS credits and corresponds to the number of hours of study (lectures, tutorials, practical work, personal projects) that the student must complete to obtain a UE. A full year represents 60 credits or 30 credits per semester.

Diplomas



DIPLOMAS

A government-sanctioned diploma and teaching backed-up by research

Health Studies

The first year of health studies (PACES) consists of core classes that prepare students to take the entrance exams to the schools of medicine, pharmacy, dentistry and midwifery. The curriculum is common to the 4 branches, with specific classes in the second semester.

Université de Nantes has three health studies programs: dentistry, pharmacy, medicine and medical technology (orthoptics, speech pathology and midwifery), taught in three schools in Nantes:

- Medicine and Medical Technology
- Dentistry
- Pharmaceutical and Biological Sciences.



Tutorials in Pharmacy

baccalaureate + 2 years

DUT

The University Diploma of Technology (DUT) is a 2-year degree program. The DUT trains students to work as senior technicians in all fields, for immediate entry to the workplace.

To pursue an advanced degree after the DUT (general license, professional license or engineering school) students must submit an application or have their experiential learning validated before being admitted.

www.univ-nantes.fr/dut

baccalaureate + 3 years

License

The License is a 3-year program. At the end of the second year, several choices are available: a general license, professional license or engineering school.

The **general license** can lead to further studies in a Master program or the competitive exams for civil service.

The **professional license**, developed in partnership with businesses, prepares students for immediate entry into the workplace in fields that require specialized skills. It does not lead to further studies towards a Master.

www.univ-nantes.fr/licence

DIPLOMAS

If you want to study physiotherapy in Nantes*, you have two possibilities:

- to pass a competitive exam at the end of the PACES (60 spots)
- to study physiotherapy at the STAPS for the first year (up to 100 students, only the first 32 students in rank are selected at the end of the year)

*Institut de formation en masso-kinésithérapie of Saint-Sébastien-sur-Loire offers 92 spots allocated by the regional council of Pays de la Loire, <https://www.ifm3r.fr>



baccalaureate + 5 years

Master

The Master is a 2-year program. During the first year (Master 1) students begin a specialization. In the second year (Master 2), students can choose a “professional” path for immediate entry in the labor market or a “research” path for pursuing doctoral studies. Many Master 2 programs require an internship of 4 to 6 months (at a business or research organization).

www.univ-nantes.fr/master

baccalaureate + 5 years

Engineering degree

Université de Nantes has an engineering school: Polytech Nantes. This is a 3-year program for students who have already completed a 2-year degree (L2 or DUT, for example). It is designed for students who want to be senior engineers in industry or industrial public service.

www.univ-nantes.fr/polytech

baccalaureate + 8 years

Doctorate

The Doctorate is open to holders of a Master degree. This degree is awarded after defending a thesis, written under the supervision and responsibility of a thesis director. The thesis is usually done in three years. The Doctorate leads to careers in research and development in the private sector but also careers as professors or researchers in public institutions (universities, CNRS...).

www.univ-nantes.fr/ecoledoctorales

EXAMS

Exam schedule

Exam notifications will be posted in the hall of your faculty.

For the IUT, there are no exam sessions, only continuous assessment.

The School of Engineering, Polytech, has specific study regulations.

Testing

For each course unit (UE) you will be tested:

- either by continuous assessment,
- or by one or more final exams,
- or by a combination of the two.

The day of the exam

- Do not forget to check the bulletin board for the dates and location of your exams
- Show up 30 minutes before your exam starts
- Pay careful attention to the location of your exam
- Do not forget your student card AND your identification card

Exam sites

Your exams may take place:

- on your campus
- at the SUAPS (map p. 71 n° 15)
- at the stadium Pierre Quinon (map p. 71)
- at la Beaujoire (for PACES exam).



Exam

EXAMS

To contact your Registrar's Office :

Intranet>Scolarité>Inscription
>Calendrier on

Succeeding in your UE, Semester, Year

Each academic field has its own grading requirements. Please see your registrar's office for more information.

Earn Sports Points

Each semester, in some faculties, schools or institutes, points can be earned through sports classes. For questions, contact the secretariat of your Faculty, institute or school.

Passing into the next year

L1 ▶ L2	if at least one semester is validated
L2 ▶ L3	If both semesters of L1 are validated + 1 semester of L2
L3 ▶ M1	Only if all semesters of the three years of License are validated and you have earned your License degree. You have to be selected.
M1 ▶ M2	only if the M1 is fully validated

** subject to conditions depending on the courses*



KEY DATES

Check the university calendar of your UFR, institute or school on

www.univ-nantes.fr/calendrier.

For all information regarding your courses, please visit your faculty, UFR, institute or school website.

Events calendar for all the campuses is available on:

www.univ-nantes.fr/agenda



	July 5	Registration begins
Semester 1	August 28 to September 11	◀ First day of classes (depending on your degree)
	August 28 to September 29	◀ Guichet Unique - Foreign Students Welcome Center, the first stop for foreign students
	September 26	Welcome Party, by Autour du Monde-ESN Nantes at the Pôle Étudiant
	October	Submission of FSDIE applications (support for student projects) (see p. 55)
	December 23th to January 7th	Christmas holidays
	Mid-December to mid-January	◀ First semester exams

KEY DATES

Semester 2	January 8th to February 2nd	◀ Guichet Unique - Foreign Students Welcome Center, the first stop for foreign students
	February	Submission of FSDIE applications (see p. 55)
	Mid-January	International Application deadline for 1st year undergraduate admission
	January 15 to May 31	Dossier Social Etudiant . Fill in your scholarship application and your accommodation application (university residences) on : www.etudiant.gouv.fr
	End of March	International Application deadline for 2nd and 3rd year undergraduate and graduate admission
	April	Submission of FSDIE applications
	April 21st to May 6th	Spring holidays
	May	◀ Second semester exams
	June	Submission of FSDIE applications (see p. 55)
	Mid-June	◀ Start of the second exam session



N



BEING A VISIONARY



SUCCEED]

.36

SUPPORT SYSTEMS
TO HELP YOU SUCCEED

.37

10 KEY TIPS

.38

STUDENT INTRANET

.39

THE UNIVNANTES MOBILE APP

.40

UNIVERSITY LIBRARY

.42

BROADENNING YOUR KNOWLEDGE

.43

CERTIFICATIONS

.45

LANGUAGE COURSES

.46

WORKING TOWARDS
YOUR CAREER GOALS

.67

GLOSSARY

SUPPORT SYSTEMS TO HELP YOU SUCCEED

Université de Nantes has developed a number of systems to help you succeed in your studies.

IMPORTANT
Discover the specific support systems for each study program

www.univ-nantes.fr/reussirsalience

New student orientation

Mentors: during registration, you are greeted by student mentors who help you discover the university, help you with the registration process and answer any questions you may have.

Welcome Week

During the first week of classes, your teachers will hold meetings where they will explain what you need to know about your schedule, the subjects taught, testing and grades. You will also have the opportunity to tour the university.

Your Academic advisor

Your academic advisor assists you throughout your first year at the university. Academic advisors will answer your questions and provide advice on facilitating the transition between high school and college.

University study skills

During the 1st semester the university offers courses to help you learn the study skills specific to your degree program. Note taking, time management, documentary research, group work, critical data analysis, writing a paper and oral presentation. You will also visit the university library during the class.

Changing tracks after the first semester of the first year of License

You can change tracks after the first semester of your first year of License if you have passed all your exams, without having to start the whole year over.

10 KEY TIPS for a successful academic year

1 ▶ Confidence

Higher education is the logical continuation of high school. You will have to get used to being more independent and that's a big change. So be confident in your abilities, but make sure you stay organized.

2 ▶ Organization

Plan your study time, set yourself goals with specific deadlines and stick to them. We offer classes on study skills (see p. 36), make sure you attend.

3 ▶ Attendance

Don't skip classes. Successful students attend all their classes. Remember that every hour in class requires one hour of homework to review your notes and do further research.

4 ▶ Motivation

90 % of successful students have chosen a field of study they are interested in. This gives them the energy and motivation to successfully overcome the difficulties.

5 ▶ Hard work

There are countless useful resources you can use to learn more about various subjects (see p. 38 to 42). Using these resources to learn better and smarter is often what makes the difference between good students and the best students.

6 ▶ Support network

Loneliness is common among students, especially at first. Try to form small working groups; you can encourage each other and your grades will improve.

7 ▶ Reflexes

If you have any doubts, questions, problems, seek help. Knowledgeable people can help, please don't hesitate to contact them (see p. 36).

8 ▶ Sociability

A good way to meet people and make friends is to get involved in a club or association. Contact the Student Life Office (see p. 55) who will refer you to the many opportunities on campus.

9 ▶ Take breaks

Get outside, have some fun, get some exercise or attend a cultural event. This is also a good way to meet new people.

10 ▶ Look at the big picture

Take time to think about your future, try to figure out your real motivations and your interest in your chosen field of study. The SUJO is here to help you identify your career goals and tailor your study program (see pp. 46-47).

STUDENT INTRANET

Access to your intranet with your login and password

see p. 14, 15, 16 and 17.

Change your password

by going to your **INTRANET**
> **VOS WEBSERVICES**
> **Mot de passe**

You have lost your password ?

You can reset it by yourself online on : www.univ-nantes.fr/motdepasse

The university staff can reset your password if you lost it. Feel free to ask them.

Please note that for security reasons, passwords cannot be provided to you by phone or email.

Advice:

Never give out your password.



The student intranet makes your life easier!

Stay connected

- **Student e-mail address:** check it regularly as all the information that concerns your classes and university life will be sent to you at this address: firstname.lastname@etu.univ-nantes.fr
- **How to access your student email address ?**
 - You have direct access to your web-mail on your **INTRANET>VOS WEBSERVICES>WEBMAIL**
 - By redirecting your student email address towards your personal mailbox (<http://moncompte.univ-nantes.fr> puis «ma messagerie»)
 - By configuring your smartphone or any other mailbox (more information on wiki.univ-nantes.fr/etudiants)
- **Other webservices:**
 - to get in touch (online forum, chat...), forwarding files (fileX)
 - to consult your classes (Madoc), your schedules, your grades;
 - to ensure your success (internship, jobs, advice...) with the Career Center

WEBSERVICES

All your online services available on one platform, **INTRANET > VOS WEBSERVICES**

THE UNIVNANTES MOBILE APP

Join the community #univnantes



A personalized and useful mobile app for your daily life !

Make your life easier by downloading the university mobile app.

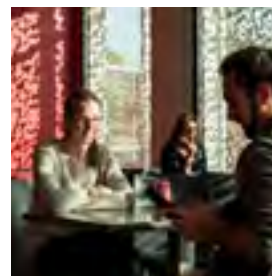
Available from September 2017 on Google Play store (Android) and Appstore (iOS), this mobile app will allow you to :

- Check your schedule and being informed in real-time about classes changes.
- Find your way on the campus.
- Receive notifications regarding changes about sports activities
- Receive alerts about your loans at the BU
- Book a seat at the NoctamBU night library
- Check the daily menu in your RU
- Configure your preferences

This app is dynamic !

It will be improved during the academic year with more micro-services:

- Public transportation schedule in real-time
- An agenda for events
- An access to the directory to find easily the contact information of your interlocutor within the university



UNIVERSITY LIBRARY

University Library:
a tool to help you
succeed

Library hours

During the academic year, 8:30 am to 7 pm Monday to Friday, and 8:30am to 1pm on Saturday mornings.

Tip

Find the real-time schedule on nantilus.univ-nantes.fr/horaires

Opening hours during university breaks

Depending on the sites, the libraries close one week at Christmas and 2 weeks in August.

More info on:
www.bu.univ-nantes.fr

The university library will help you during your studies!



With seven locations in Nantes, Saint-Nazaire and La Roche-sur-Yon (pp. 62 to 65), the university library offers you **multidisciplinary documentary collections**, on divers supports, for courses, research, information and leisure.

The printed collections are indexed in a **unique catalog, Nantilus**: nantilus.univ-nantes.fr.

You will find encyclopaedias, books, thesis, e-books, scientific journals, international newspapers papers, and search databases in all academic fields, but also novels, comic books and DVD.



UNIVERSITY LIBRARY

NoctamBU

From September to Mid-June, 400 spots are offered on expanded evening hours until 11:30 pm and on weekends at the Health Library (city centre, map p. 68 n° 4).

Reservation required on:

<http://nantilus.univ-nantes.fr/noctambu> or even better from your mobile app

Loan at the BU

The mobile app will allow you to receive alerts regarding your loans.

Nomade

Most of these digital resources are accessible not only at the library, but also remotely.

The online service "nomade" is accessible from your **INTRANET > VOS WEBSERVICES > Accès nomade**



The library also offers many services:

- **individual study spots and working rooms** for groups; with disabled access;
- borrowing of documents and interlibrary loan of documents;
- information by chat and e-mail;
- **documentary research training** with the librarians and Madoc BU;
- **cultural events**;
- loan of computers on site, computer rooms, WIFI and copy machines;
- documents printing with your student card
- and also, **novels, comics, movies...**
- exhibitions and various cultural events (conferences, readings, workshops...)
- Facilities for people with disabilities

Find more information about the BU on:

www.bu.univ-nantes.fr
twitter.com/univnantesbu

BOARDENING YOUR KNOWLEDGE



www.webtv.univ-nantes.fr



www.youtube.fr/univnantes

The University of Nantes is the **1st French University on Youtube** with its 15000 followers.



plus.franceculture.fr/partenaires/nantes



Component of the University, UP's goal is to ensure education all life long, to spread university culture and to make it accessible to a wider audience.



www.labodessavoirs.fr

More than 900 video resources on the university webTV

Short and original formats to understand Research in a different way.

- «Digression», «one question one researcher», «Looking for innovation»...
- Full conferences about society topics.

UP!

The Permanent University (UP) offers:

- conferences, meetings and exhibitions from November to May, from Monday to Saturday (free of charge upon presentation of your student card)
- «The musical hour» every thursday at 6:30pm
- Courses: Subscription required. (The price of the courses in the programme will be available from July 29th, 2017)

How subscribe to the Permanent University (UP)?

From June 19th, to July 16th, 2017 on www.up.univ-nantes.fr to get a registration appointment.

- Subscription reduced price for Université de Nantes students : 27€
- Bring an ID photo, a form of payment (French check or credit card) and your student card.

Contact : univ-perm@univ-nantes.fr
More information on www.up.univ-nantes.fr

The «Labo des savoirs»

Every week, some volunteer journalists from the «Labo des Savoirs» (Lab of Knowledge) meet researchers and highlight Research through interviews and scientific reports.

CERTIFICATIONS

The C2i - Digital Skills Certificate

Prepare your digital skills certificate !

These certificates will allow you to prove that you control these skills to succeed in your studies and to be part of the working life.

A large part of undergraduate programs at the University offer C2i level 1 classes as either an elective or as a degree requirement.

Please register for the certification exam in your undergraduate program. All registration for the C2i certification exams must be done on a voluntary basis. Two exam sessions are organized throughout the academic year: in January/February and in May/June.

For more information on the procedure and registration dates:

www.univ-nantes.fr/c2i > *Inscription à la certification*

There are two C2i levels

- **The C2i level 1** certifies the command of skills needed to communicate, analyze one's results, present one's work, and handle a complex work environment in compliance with laws and regulations (data protection, copyright, downloading, plagiarism, to name a few).
- **The C2i level 2** certificates are intended for a professional use of computer tools within an academic field or a profession, and are destined for students in defined master's programs (teaching, legal professions, health professions, managers).

Information and registration

on the dedicated website: www.univ-nantes.fr/c2i

Université de Nantes offers students the opportunity to certify their computer and language skills.

How to prepare the C2i certification?

Madoc, an educational resource platform, gives you access to online resources. Please sign in through your **INTRANET** > **VOS WEBSERVICES** > **Madoc**.

Independent candidates

Many programs include the C2i in their courses. If not, they can take the certificate test as an "independent candidate".

For further information,

please contact the C2i office at Université de Nantes: c2i@univ-nantes.fr



Pix

PIX is a public online platform project for digital skills assessment and certification. The goal, once the development will be achieved, is to replace the C2i.

The Université de Nantes is involved in its development and will offer this new kind of certification to its students.

CERTIFICATIONS

The Language Center of Université de Nantes advises and guides you throughout your language certification.

The Language Center welcomes you :

23 rue du Recteur Schmitt
Bat F0 in Nantes
Tramline 2 - Recteur Schmitt
(map p 71 n°24)

servicelanguages@univ-nantes.fr

When and how to take an assessment exam to receive a certificate of proficiency in a language?

Whenever you feel ready. To assess your language skills, to study abroad with an exchange program or for your résumé.



French Language Certificates and Tests

The Language Center organizes 2 official French language certifications recognized by the French Ministry of Education:

- The DELF (Diplôme d'études en langue française) and the DALF (Diplôme approfondi de langue française).
- The TCF (Test de connaissance du français) and the DAP-TCF (required for first year undergraduate admission).

For further information and dates:

www.univ-nantes.fr/certificationfle

Certification in other languages

Your proficiency in a foreign language can be attested by an assessment exam that will test your oral and/or written language skills. Certification is available in German, English, Catalan, Chinese, Spanish, Italian and Brazilian Portuguese.

Certification is a requirement for some Master and License programs.

It is highly valued in terms of international mobility and is an asset to your employability.

LANGUAGE COURSES

The Language Center also guides you throughout your learning of foreign languages.

French Language Course

The Language Center offers French language courses for all proficiency levels:

- DELF B2 Preparation Courses (2h/week)
- Semester courses (18 hours a week)
- Evening support courses (4 hours a week)
- Spring and summer courses
- Courses for foreign researchers (contact: Maison des chercheurs étrangers: maisondeschercheuse-trangers@univ-nantes.fr or +33 (0)2 53 46 21 73)
- Courses for foreign doctorate students (contact your lab)

Practice other languages

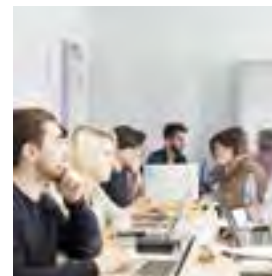
Get ready to take the language assessment exams thanks to **preparatory classes** and **language courses** organized by the Language Center each semester.

Any student of Université de Nantes can attend the classes (registration mandatory): intensive language programs, conversation workshops, refresher courses in English, help in writing CVs and cover letters in foreign languages, familiarization with the structure of the tests.

Other classes are offered in partnership with the International Office (more than 20 languages are available with the "Modimes" and "Plus dites" programs).

E-learning

You have an **access** to the e-learning web service to improve and self-evaluate your language skills.



Information and registration:

servicelanguages@univ-nantes.fr

www.univ-nantes.fr/pratiquerleslangues

WORKING TOWARDS YOUR CAREER GOALS

Throughout your academic career, get ready for your professional future

Hours

Monday through Friday
from 8:30 am to 5:30 pm

Maison des services universitaires
110 boulevard Michelet in Nantes
+33 (0)240 3710 00
(map p. 70 n° 35)

Tram line 2 – Stop Michelet or Morrhonnière

The resource centre welcomes you :

From Monday afternoon to Friday:
9:30 am to 12:30 pm
1:30 pm to 5:30 pm
Closed on Monday morning



Maison des services universitaires

Online services in your Career Center:

- Personalized access
- Jobs videos
- Events and advice
- Internship and job offers
- Information about companies
- Resources for your career



Registration:

www.univ-nantes.fr/careercenter

An available team, some personal advice, and some collective workshops to :

- Get some career guidance
- Meet professionals, and learn how to convince them
- Find an internship, a job

For more information INTRANET

> *Orientation – Parcours – Métiers*

WORKING TOWARDS YOUR CAREER GOALS

All year long, our advisors guide you at each step of your career.

Meeting professionals

- Student jobs : workshops and fair (September)
- Find an internship (October to December)
- Summer jobs (April)

Building your educational curriculum

- Succeed in your academic reorientation
- Be accepted in some selective programmes (February to April)
- Continuing your work-linked training (March to April)

Student Entrepreneur

With the Student Entrepreneur Status, you can have access to a workplace, advising services, workshops, conferences, you can develop your network... and your ideas can become a concrete start-up project.

Further Information:

www.entreprendre.univ-nantes.fr



Créactiv welcomes you:

on the Tertre Campus in Nantes
Bâtiment Petit-Port
Chemin de la Censive du Tertre
(map p. 69 n° 14)

Tram line 2 – Stop Facultés
+33 (0)240 14 12 72
creactiv@univ-nantes.fr





UN!

CREATING NEW INTERACTIONS

[STUDENT LIFE]

- .50** STUDENT BUDGET
- .52** HEALTH CENTER
- .54** UNIVERSAL HEALTH CARE (SÉCURITÉ SOCIALE) AND STUDENT SUPPLEMENTARY INSURANCE
- .55** STUDENT INITIATIVES
- .56** PÔLE ÉTUDIANT - STUDENT CENTRE
- .57** CULTURE
- .58** SPORTS
- .60** PUBLIC TRANSPORT
- .62** USEFUL CONTACTS
- .67** GLOSSARY
- .69** CAMPUS MAPS

STUDENT BUDGET

	1st month	Following months
Registration fees		
• License	189,10 €	
• Master	261,10 €	
• Doctorate	396,10 €	
Universal Health Care	215 €	
Student Supplementary Insurance	10 € to 80 €	10 € to 80 €
Housing (<i>1st month + 1 month deposit</i>)		
• cité U CROUS (room / studette / studio)	340 € to 738 €	164 € to 378 €
• in a university residence hall (T1 / T1 bis)	441 € to 971 €	257 € to 548 €
• in an off-campus apartment	1200 €	600 €
Housing insurance	40 € to 65 € / a year	
University cafeteria (3,25 € per meal)	+/- 195 € for 2 meals a day (7 days a week)	
Public transport pass (under age 26)	+/- 38 €	+/- 38 €
School supplies (depending on study program)	+/-150 €	+/-50 €
Miscellaneous (entertainment)	100 €	100 €
Residency Permit <i>Other cases, contact the international office</i>	1st Year : 58€ Renewal : - 49€ for a 1-year residency permit - 77€ for a multiannual residency permit (2 or 3 years)	

Fees for 2016-2017

STUDENT BUDGET

Meals, housing and transport

CROUS housing and scholarships:
www.crous-nantes.fr

All CROUS housing give right to the CAF (Caisse d'Allocations Familiales) housing allowance.

Housing allowance (APL): www.caf.fr

Find all the information on
www.univ-nantes.fr/viepratique

Summer jobs and seasonal jobs

Are you looking for a work to finance your studies or your holidays? Université de Nantes will help you in your job search and even offers some jobs on campus.

www.uni-nantes.fr/careercenter

If you are a non-European student, except students from Croatia, you need to have a valid residence permit that authorizes you to work. Foreign students are allowed to work up to 20 hours per week (60% of the legal work time in France).

Are you struggling with unexpected expenses or a lack of resources? Do you have difficulty balancing your budget?

Social workers at SUMPPS (see p.52) can help you get through difficult times by giving you information about the help you can seek (grants, loans, budget...) and your rights regarding housing, social protection... and all other aspects of daily life.

More information on your INTRANET > SANTÉ SOCIAL

Social Pricing for Transport Pass

In Nantes and Saint-Nazaire, you can get up to 50% discount or a free transport pass depending on your incomes. All information on : www.tan.fr (for Nantes) or www.stran.fr (for Saint-Nazaire).

Working within the University

Your University also offers some student jobs.

On the University website :

[L'Université > Travailler à l'Université > Recrutement étudiant](#)

HEALTH CENTER

Student Health Center (SUMPPS)

Maison des services universitaires
110 bd Michelet – Nantes
map p. 72 n° 35
Tram line 2. Stop: Morrhonière or Michelet

accueil.sumpps@univ-nantes.fr
+33 (0)2 40 37 10 50

More information on your INTRANET: > **SANTÉ SOCIAL**

- If you have a **health condition**,
- If your **primary physician is far away**,
- Or if you're having a **difficult time adjusting**, you may need to speak to somebody.

Please contact the student health center.

Medical Services at your service

Nursing (preventive visit - care - emergency contraception - pregnancy test - vaccination - smoking cessation - well-being workshop - cooking and nutrition workshop - first-aid training session - supporting and counseling services).

General Practitioner, Consultations with appointments. Take an appointment on univ.nantes.contact-sante.fr

Create your account using your student email address.

Psychological service, Consultations with appointments to take by phone or at the SUMPPS.

Social service, depending on your UFR, faculty, please take an appointment at the Student Health Center (+33 (0)2 40 37 10 99) or at the CROUS (+33 (0)2 40 37 13 39).

You can find your social service contact on the **INTRANET > SANTÉ SOCIAL > Service Social**

Disabilities

You can take an appointment with a doctor and ask for arrangements of your exams or academic program.

Please contact the "Relais Handicap" (see p. 19).



Students «Relais Santé» (for Health Prevention)

HEALTH CENTER

Preventive Medical Visit

Don't forget to attend your preventive medical visit **during your 1st year at the university**.

For students registered in medical studies, the preventive visit has to be done during the 2nd year of studies.

Registration on:
INTRANET > Santé Social >



or on <http://meduse.univ-nantes.fr/Login.do>

Schedule are online every 15 days for you to choose the most convenient date for your Preventive Medical Visit.

Oral healthcare diagnostic

Some dentistry interns offer an oral diagnostic (Online appointments > p.58)

Doctor's appointment - First stop - General practice, Gynecology, and Nutrition

Open to all students but priority is given to:

- students with financial problems
- students without a primary physician
- foreign students

Documents you MUST bring to the appointment:

- your proof of universal health coverage ("sécurité sociale")*

AND

- your proof of supplementary insurance ("mutuelle") if you have one
- your student card.

*For European Union citizens, please bring your European health insurance card.



Maison des services universitaires

If you bring all documents, you will not have to pay: the Student Health Center will be reimbursed by your Student Health Care Coverage and Supplementary Insurance.

If you do not have a supplementary insurance, you will pay the "ticket modérateur", which is the non-covered part of the cost of your medical expenses, and you will have to pay with credit card or check (6,90€ for a GP visit, 11,10€ for psychological visit).

UNIVERSAL HEALTH CARE (SÉCURITÉ SOCIALE) AND STUDENT SUPPLEMENTARY INSURANCE

Which student universal health care coverage should I choose?

To help you choose between the LMDE and the SMEBA, you can look at the brochures on www.univ-nantes.fr/securitesociale

LMDE and SMEBA also provide Student Supplementary Insurance with discount for students. Compare on: <http://mutuelle.fr/infos/etudiant>

Health and health care coverage for foreign students.

Find all the information on www.univ-nantes.fr/foreignstudent

Universal Student Health Care (Sécurité Sociale)

If you are a non-European student enrolled for 90 days or longer at the university and you are:

- Under the age of 28: registration to the Universal Student Health Care is mandatory. You will have to pay when you register at the University (217€).
- 28 or older: you need to contact the Caisse Primaire d'Assurance Maladie (CPAM), and you do not pay for Universal Student Health Care at registration.

The Universal Student Health Care covers you from October 1st, 2017 to September 30, 2018. You are reimbursed of your healthcare expenses (you can check the reimbursement rate with your Health Care Coverage). More information on: www.univ-nantes.fr/securitesociale

If you are a European student, bring your European Health Insurance Card, you will still be covered by your home health care system.

Student Supplementary Insurance, what is it for?

The Student Supplementary Insurance covers the expenses that are not reimbursed by the Universal Student Health Care.

Registration is not mandatory, but can be recommended to be fully reimbursed of medical expenses. Otherwise, you will pay a third of the cost of your medical expenses, at least.

STUDENT INITIATIVES

Get involved in student associations

The start of an academic year is a perfect time to learn more about student associations, get involved and participate in student life on the campus. Joining a student association is a great immersion experience and it is a good way to share and exchange knowledge. Student associations allow you to experience and to build your own projects in order to enhance your experience.

You can find updates and student clubs at université de Nantes at www.univ-nantes.fr/associations.

Student initiatives

Do you have a project that deals with the University and its student body in Nantes, La Roche-sur-Yon or Saint-Nazaire: exhibits, debates, concerts, theater, sporting events?

The Student Life Office is here to advise and assist you in your thought process and the setting up your personal or group projects.

I have plenty of ideas but where do I start?

Please contact the team at the Student Life Office (DVE) for assistance with your projects: starting a club, administrative procedures, financing and much more.

Contact and information

dve@univ-nantes.fr • www.univ-nantes.fr/dve • www.univ-nantes.fr/portailassos

Pôle étudiant - Student Centre - Campus du Tertre
Tram line 2, stop Facultés (map p. 71 n° 11).

Resources to implement your projects in the best conditions possible

The FSDIE (Fund for Solidarity and Development of Student Initiatives) is destined to finance your projects that stimulate and animate student life on all the different campuses of Université de Nantes.



PÔLE ÉTUDIANT STUDENT CENTRE

Bands who have performed here

The Chap • Jabberwocky • Colin Stetson • Fuck Buttons • El-P • Mike Ladd • Sage Francis • Zombie Zombie • Radian • Beans • The Ex • Ninos Du Brazil • Speech DeBelle • James Chance • Dels • K-X-P • Moon Duo • C2C • Fischback • Simian Mobile Disco...

Directions to the Pôle étudiant

Tram line 2, stop Facultés
Bus lines 25 and 83, stop Fac de Droit

(map p. 71 n° 11)

Follow the Student Center events



#Poleetudiant



The Pôle étudiant on the Tertre Campus

The Auditorium of Université de Nantes

Concerts, exhibits, debates, movie screenings, theater..., Pôle étudiant is **the hub of cultural life** at Université de Nantes.

It is a resource for your projects with **spaces dedicated to associations**: shared office space, a meeting room and workshops.

At the Pôle étudiant you will also find all the information about student life in Nantes and services to facilitate your studies.

The Pôle étudiant also has a **cafeteria** open all day and evening.

Université de Nantes Events Calendar

Find out about events in the monthly magazine, available on campus and online on the university website: www.univ-nantes.fr/agenda

You will also receive the calendar every 15 days by email: firstname.lastname@etu.univ-nantes.fr

CULTURE

Cultural classes and workshops

The University artistic and cultural workshops allow you to discover a new artistic activity in a friendly atmosphere.

They are open to everyone, without prerequisites nor extra fees :

- Workshops in the following fields are offered:
- reading, writing, publishing
- creativity and experimentation
- image, film and new media
- art history and visual arts
- arts (hands-on practice and analysis).

Contact :
ateliers-culture@univ-nantes.fr

Information on
www.univ-nantes.fr/culture

Forum for Cultural Classes and Workshop

Tuesday Sept. 26 from 6pm until 8pm at the Pôle étudiant. Meet with the workshop coordinators and register.



Theater Workshop «O.S.E.R.»
Production

Boost your curiosity !

Do you want to be part of a workshop on a regular basis ? The weekly workshop is made for you.

Do you want to participate beside the course week ? Choose the weekend training.

Do you want to be part of some highlights? Participate to shared creations with invited artists on the campuses to discover contemporary creation, to live a friendly experience, ... and embellish your daily life.

Experiment

Discover original artistic events, all year long, at the Pôle étudiant, at the University Theater, in libraries and in unexpected places. The cultural programming is available on our monthly calendar or on our website.

Get involved

- participate in cultural workshops with artists and get involved in student associations on campus.
- take advantage of the APPUIS program, which provides support for your performing art projects and puts you in contact with professionals in collaboration with the University Theater, and the CROUS.
- exhibit your photographic talents at the Temps d'Exposition.
- Contribute to the blog «The Culture and you» to give your opinion about culture at the University.

Invent

We welcome your initiatives and projects! The university is happy to provide support.

Contact : culture@univ-nantes.fr
Information is available on:
www.univ-nantes.fr/culture

SPORTS

The university service for physical education offers sports classes and personal training to fit into your academic schedule. It also gives you an opportunity to participate in competitions with the university sports teams.

Mobile app !

Download the university mobile app to receive alerts regarding your sports activities (schedule changes, cancellation, last-minute information).



As part of your academic program... For leisure... For competition?

As part of your academic program...

Sports activities can be an integral part of some academic career or they can be complementary to your academic schedule. You may choose from a variety of levels and times. Activities take place on different sites of the university.

For leisure...

A wide variety of activities: water sports, well-being activities, dance, team sports, racket sports, combat sports, sailing and gliding, and also climbing, mountain bike, circus, gymnastic, hiking, surf...

- **Registration begins** on September 4th, 2017, with no closing date. Classes begin September 11th, 2017.
- You must pre-register on your **INTRANET** > **VOS WEBSERVICES** > **Inscription au sport** (please have your login and password, see p. 16).
- Validation of the preregistration at the SUAPS office with a medical certificate.

NOTE:

Registration fees cannot be refunded. However, you can switch to a different activity based on availability.

Brochures are available at the end of August at the SUAPS front desk, 3 boulevard Guy Mollet in Nantes (map p. 71 n° 15).

SPORTS

2016-2017 French University Championships

Our athletes have won numerous medals, making the Association Sportives de l'Université de Nantes (ASUN) one of the top in France:

- **Athletics:** France Champion and podiums in track & indoor
- **Rowing:** France Champion Women's eight team and quadruple sculls,
- **Badminton:** Podiums in double mixed team and double women team
- **Basketball - Women 3x3**
Team: World and France Champion and vice-Champion for 5x5 Team
- **Fencing - Men foil :** France vice-Champion in team
- **Football - Women and men teams :** several times France University Champions
- **Sailing:** France Champion on fleet racing and France vice-Champion on match racing,
- **Savate:** 3 times France Champion and 2 times France vice-Champion,
- **Volley-ball - Women Team :** France vice-Champion.
- **Rugby - Women :** 3rd team at France University Championship
- **Judo :** Individual France Champion (-90Kg)

Support Université de Nantes in the university competitions

Teams are formed to represent the university at all levels of competition, whether it be local, academic, national, international, and depending on your level, your desires and your availability.

Join the university teams with the sports association of Université de Nantes (ASUN).

Ask for your university sport licence when registering at SUAPS.

Competitive sports

A special system is reserved for competitive athletes registered with the Ministry of Youth and Sports (see p. 21).

Special arrangements are also provided for students enrolled in university sports sections (SSU) or who play on national teams.

For more information on sports activities at the university: www.univ-nantes.fr/sport



Université de Nantes Rowing Team

PUBLIC TRANSPORT

Nantes

• **Tan**, the public transport system serving greater Nantes: buses, trams, river bus (navibus), busway and airport shuttle.

www.tan.fr

• **Bicloo**, self-service bike.

www.bicloo.nantesmetropole.fr

• **NGE**, bike rental for a year.

www.velos-nantes.fr/fr/louer-un-velo

• **Géovélo**, Calculate your biking route depending on various criteria (the safest, the easiest...) on:

www.geovelo.nantesmetropole.fr

• **Velocampus**, bike rental for students

www.velocampus.net

• **Marguerite**, Nantes self-service cars.

<http://www.imarguerite.com/>

• **Car-Sharing**, free car-sharing service:

www.covoiturage-nantesmetropole.fr/

Be aware!

Using your car is not the best way to go to the campuses.

Prefer using public transport or a bike!

Loire-Atlantique

• **Lila**, intercity bus service in Loire-Atlantique, 45 lines serving the local cities.

<http://sedeplacer.loire-atlantique.fr>

Pays de la Loire

• **Destineo**, an online service to map your route using public transportation.

www.destineo.fr

• **TER Pays de la Loire**, the local rail network.

www.ter-sncf.com

At Université de Nantes:

• You will find bike parking on each campus.

• Public Transports :
www.univ-nantes.fr/transports

• All the parking lots are indicated on the campus maps:
www.univ-nantes.fr/plans



A bike parking on the campus

PUBLIC TRANSPORT

Saint-Nazaire

• **Stran**, the public transport system serving greater Saint-Nazaire.

www.stran.fr

• **Place au vélo**, with the partnership of the CARENE, bike rental for students.

<http://saintnazaire.fubicy.org>

La Roche-sur-Yon

• **Impulsyon**, the public transport system in La Roche-sur-Yon.

www.impulsyon.fr



USEFUL CONTACTS

Your registrar's office

Find all the contact information for the registrar's office on your

INTRANET > SCOLARITÉ, INSCRIPTION, CALENDRIER

■ Law, economics and management

IAE-Nantes

Erdre Building

Chemin de la Censive du Tertre
BP 62 232
44 322 Nantes CEDEX 3
+33 (0)2 40 14 17 17
▶ map p. 71 n° 9

Petit-Port Building

Chemin de la Censive du Tertre
BP 62 232
44 322 Nantes CEDEX 3
+33 (0)2 40 14 12 20
▶ map p. 71 n° 14

www.iemn-iae.univ-nantes.fr

Maritime school

38 rue Gabriel Péri
BP 90 303
44 103 Nantes CEDEX 04
+33 (0)2 40 99 84 84
▶ map p. 70 n° 10

Institute of General Administration (IPAG)

Chemin de la Censive du Tertre
BP 81 307
44 313 Nantes CEDEX 3
+33 (0)2 40 14 16 11
www.ipag.univ-nantes.fr
▶ map p. 71 n° 7



■ Law and political sciences

Chemin de la Censive du Tertre
BP 81 307
44 313 Nantes CEDEX 3
+33 (0)2 40 14 15 15
www.droit.univ-nantes.fr
▶ map p. 71 n° 7

University library law, economics and management

Chemin de la Censive du Tertre
BP 12 236
44 322 Nantes CEDEX 3
+33 (0)2 40 14 14 70
contact.bu-droit@univ-nantes.fr
▶ map p. 71 n° 10

USEFUL CONTACTS

■ Languages

Foreign languages and cultures

Chemin de la Censive du Tertre
BP 81 227
44 312 Nantes CEDEX 3
+33 (0)2 40 14 12 99
www.flce.univ-nantes.fr
▶ map. 71 n° 8

■ Letters and social sciences

French literature and Humanities

Chemin de la Censive du Tertre
BP 81 227
44 312 Nantes CEDEX 3
+33 (0)2 40 14 10 42
www.lettreslangages.univ-nantes.fr
▶ map p. 71 n° 12

Institute of Geography and regional planning (IGARUN)

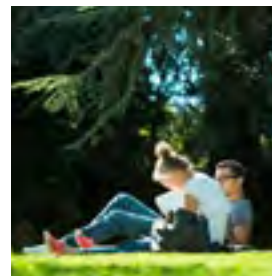
Chemin de la Censive du Tertre
BP 81 227
44 312 Nantes CEDEX 3
+33 (0)2 53 48 7 500
www.igarun.univ-nantes.fr
▶ map p. 71 n° 5

History, art history and archaeology

Chemin de la Censive du Tertre
BP 81 227
44 312 Nantes CEDEX 3
+33 (0)2 40 14 11 03
www.histoire.univ-nantes.fr
▶ map p. 71 n° 3

University Library of Sciences and Technology, and STAPS

▶ p. 72



■ Psychology

Chemin de la Censive du Tertre
BP 81 227
44 312 Nantes CEDEX 3
+33 (0)2 40 14 14 95
www.psychologie.univ-nantes.fr
▶ map p. 71 n° 3

■ Sociology

23 rue du Recteur Schmitt
44 312 Nantes Cedex 5
+33 (0)2 53 48 77 50
www.socio.univ-nantes.fr
▶ map p. 71 n° 24

Science and technology of sports and physical activity (STAPS)

25 bis boulevard Guy Mollet
BP 72 206
44 322 Nantes CEDEX 3
+33 (0)2 51 83 72 00
www.staps.univ-nantes.fr
▶ map p. 71 n° 19

University library of Letters, Humanities and social sciences

Chemin de la Censive du Tertre
BP 32 211
44 322 Nantes CEDEX 3
+33 (0)2 40 14 13 23
contact.bu-lshs@univ-nantes.fr
▶ map p. 71 n° 6

USEFUL CONTACTS

■ Health

■ Medicine and Medical Technology

1 rue Gaston Veil
BP 53 508
44 035 Nantes CEDEX 1
+33 (0)2 40 41 28 28
www.medecine.univ-nantes.fr
▶ map p. 70 n° 2

■ Dentistry

1 place Alexis Ricordeau
BP 84 215
44 042 Nantes CEDEX 1
+33 (0)2 40 41 29 21
www.odonto.univ-nantes.fr
▶ map p. 70 n° 5

■ Pharmaceutical and biological sciences

9 rue Bias
BP 53 508
44 035 Nantes CEDEX 1
+33 (0)2 53 48 00 99
www.pharma.univ-nantes.fr
▶ map p. 70 n° 4

■ University library of Health

9 rue Bias - BP 61 112
44 011 Nantes CEDEX 1
+33 (0)2 53 48 47 00
contact.bu-sante@univ-nantes.fr
▶ map p. 70 n° 4

■ Sciences

■ Sciences and technology

2 rue de la Houssinière
BP 92 208
44 322 Nantes CEDEX 3
+33 (0)2 51 12 52 12
www.sciences-techniques.univ-nantes.fr
▶ map p. 72

■ University library of Sciences and Technology, and STAPS, Lombarderie Campus

2 rue de la Houssinière
BP 82 207
44 322 Nantes CEDEX 3
+33 (0)2 51 12 52 20
contact.bu-sciences@univ-nantes.fr
▶ map p. 72 n° 18

■ University campus of Saint-Nazaire

■ Gavy campus

Boulevard de l'université
BP 152
44 603 Saint-Nazaire CEDEX
+33 (0)2 40 90 50 40
www.polesn.univ-nantes.fr
▶ map p. 75

■ University library of Gavy Saint-Nazaire

(Library Étienne Garnier)
Campus de Gavy Océanis
Boulevard de l'Université
BP 152
+33 (0)2 40 90 50 96
contact.bu-saintnazaire@univ-nantes.fr
▶ map p. 75

■ University campus of La Roche-sur-Yon

18 boulevard Gaston Defferre
cs 50 020
85 035 la Roche-sur-Yon
+33 (0)2 53 80 41 00
www.polelrsy.univ-nantes.fr
▶ map p. 74

■ BU La Roche-sur-Yon

Pôle Universitaire Yonnais
Campus de la Courtaisière
18 bd G. Defferre
+33 (0)2 53 80 41 34
contact.bu-larochesuryon@univ-nantes.fr
▶ map p. 74 n° 8

USEFUL CONTACTS

■ Technology

■ IUT of Nantes

La Fleuriaye campus:
2 avenue du Pr Jean Rouxel
BP 539
44 475 Carquefou CEDEX
+33 (0)2 28 09 20 00
▶ map p. 73

■ Nantes campus:

3 rue Maréchal Joffre
BP 34 103
44 041 Nantes CEDEX 1
+33 (0)2 40 30 60 90
▶ map p. 70 n° 15 to 17
www.iutnantes.univ-nantes.fr

■ IUT of Saint-Nazaire

58 rue Michel Ange - BP 420
44 606 Saint-Nazaire CEDEX
+33 (0)2 40 17 81 59
www.iut-sn.univ-nantes.fr
▶ map p. 73



Pharmacy Building and Health Library

■ IUT of La Roche-sur-Yon

18 boulevard Gaston Defferre
cs 50 020
85 035 La Roche-sur-Yon
CEDEX
+33 (0)2 51 47 40 00
www.iutlaroche.univ-nantes.fr
▶ map p. 74 n° 1 to 4

■ Polytech Nantes

Engineering School
of Université de Nantes

■ La Chantrerie campus

Rue Christian Pauc
CS 50 609
44 306 Nantes CEDEX 3
+33 (0)2 40 68 32 00
▶ map. 73 n° 1 and 2

■ Gavy campus:

Gavy Océanis
CS 70 152
44 603 Saint-Nazaire CEDEX
+33 (0)2 40 905 030
▶ map p. 75 n° 19
www.polytech.univ-nantes.fr

■ University library of Science and Technology, and STAPS, Chantrerie Campus

Rue Christian Pauc
BP 70 611
44 306 Nantes
+33 (0)2 51 85 74 42/43
contact.bu-technologies@univ-nantes.fr
▶ map p. 73 n° 3

■ Teacher training school (ESPE)

4 chemin de Launay Violette
BP 12227
44322 Nantes CEDEX 3
+33 (0)2 53 59 23 00
www.espe.univ-nantes.fr
▶ map p. 71 n° 21

■ Associated and Partner Libraries

www.univ-nantes.fr/BU > BIBLIOTHÈQUES ASSOCIÉES ET PARTENAIRES

■ Permanent University

Building "Ateliers et chantiers de Nantes"
2 et 2 bis bd Léon Bureau
Bureau 2016
44200 Nantes
+33 (0)2 72 64 88 64
univ-perm@univ-nantes.fr
▶ map p. 71 n° 21

USEFUL CONTACTS

■ Services

DVE - Student Life Office

Pôle étudiant
Chemin de la Censive du Tertre
BP 41 214
44 312 Nantes CEDEX 3
+33(0)2 72 64 04 40
dve@univ-nantes.fr
▶ map p. 71 n° 11

DCI - Culture and Initiatives Office

Pôle étudiant
Chemin de la Censive du Tertre BP 41 214
44 312 Nantes CEDEX 3
+33 (0)2 72 64 04 53
culture@univ-nantes.fr
▶ map p. 71 n° 11



DRI - International Relations Office

Maison des échanges internationaux et de la francophonie (MEIF)
15 Chaussée de la Madeleine
BP 13 522
44 035 Nantes CEDEX 1
+33 (0)2 53 46 21 62
international@univ-nantes.fr
▶ map p. 70 n° 8

Student health center

Maison des services
110 bd Michelet - BP 32 238
44 322 Nantes CEDEX 3
+33(0)2 40 37 10 50
sumpps@univ-nantes.fr
▶ map p. 72 n° 35

Disabled Students Office

Maison des services
110 bd Michelet - BP 42 212
44 322 Nantes CEDEX 3
+33(0)2 40 37 10 35
relais.handicap@univ-nantes.fr
▶ map p. 72 n° 35

Professional Integration Office

Maison des services
110 bd Michelet - BP 42 212
44 322 Nantes CEDEX 3
+33(0)2 40 37 10 00
suio@univ-nantes.fr
▶ map p. 72 n° 35

Créativ' – Resources center for student entrepreneurship

Chemin de la Censive du Tertre
Bâtiment Petit Port
BP 62 232
44 322 Nantes CEDEX 3
+33(0)2 40 14 13 73
creactiv@univ-nantes.fr
▶ map p. 71 n° 14

Language Center

23 rue du Recteur Schmitt
Bâtiment F0
BP 81 227
44 312 Nantes CEDEX 3
servicelanguages@univ-nantes.fr
▶ map p. 71

SUAPS - Sports

3 boulevard Guy Mollet
44 300 Nantes
+33(0)2 40 99 84 48
suaps@univ-nantes.fr
▶ map p. 71 n° 15

Vocational Training Center (CFA) inter-universities

Building «Ateliers et chantiers de Nantes»
2 bis bd Léon Bureau
44200 Nantes
+33(0)2 72 64 88 71
www.cfainteruniversites.com

GLOSSARY

BU

University Library. There are 7 locations:

- BU Law, economics and management
- BU Letters, Humanities and social sciences
- BU Health
- BU Science and technology, and STAPS (Lombarderie and Chantrerie campuses)
- BU of La Roche-sur-Yon
- BU of Gavy Saint-Nazaire.

C2i

Computer and Internet Literacy Certificate

CM

Lecture [cours magistral]

Components

The UFRs, faculties, institutes and school are the components of Université de Nantes.

Credits/ECTS

The credit system provides credits valid in the countries of the European Higher Education Area. It is sort of a “common currency”. Each validated course unit (UE) gives a certain number of credits, based on a maximum of 30 credits per semester.

The credits earned are permanently capitalizable. They are transferable (subject to acceptance by the teaching staff) in France and Europe, that is to say, the students' achievements are recognized and they can continue their studies in another institution without starting over.

DCI

Culture and Initiatives Office

DEVU

Office of Academics affairs and University Life

DRI

International Relations Office

DRPI

Office of Research, Innovation and Partnerships

DVE

Office of Student Life

ECTS

See Credits

Erasmus +

Programme funded by the European Union to support the European activities of higher education institutions, in particular student and staff exchanges..

GLOSSARY

Field of study

All the LMD programs are grouped into fields. One field is composed of several disciplines. Université de Nantes offers four fields:

- Arts, humanities, languages
- Law, economics, management
- Social sciences
- Science, technology, health

Each field is subdivided into majors and in some cases each major is divided into specialities.

FSDIE

A fund for solidarity and development of student initiatives. It provides financial support for student projects that animate student life on the campuses.

Gateways

Gateways enable students to switch programs or majors.

LMD

License - Master - Doctorate

MoDimes

Less Commonly Taught Languages.

Options

Students can personalize their course of study by choosing options.

S1-S2

Semester 1 - semester 2

SUAPS

Department of sports and physical activities

SUIO

University information and guidance service

SUMPPS

Department of preventive medicine and health promotion This service is also called the Student Health Center.

TD

Tutorials [Travaux dirigés]

TP

Labs [Travaux pratiques]

UE

Course unit [Unité d'enseignement]

UED

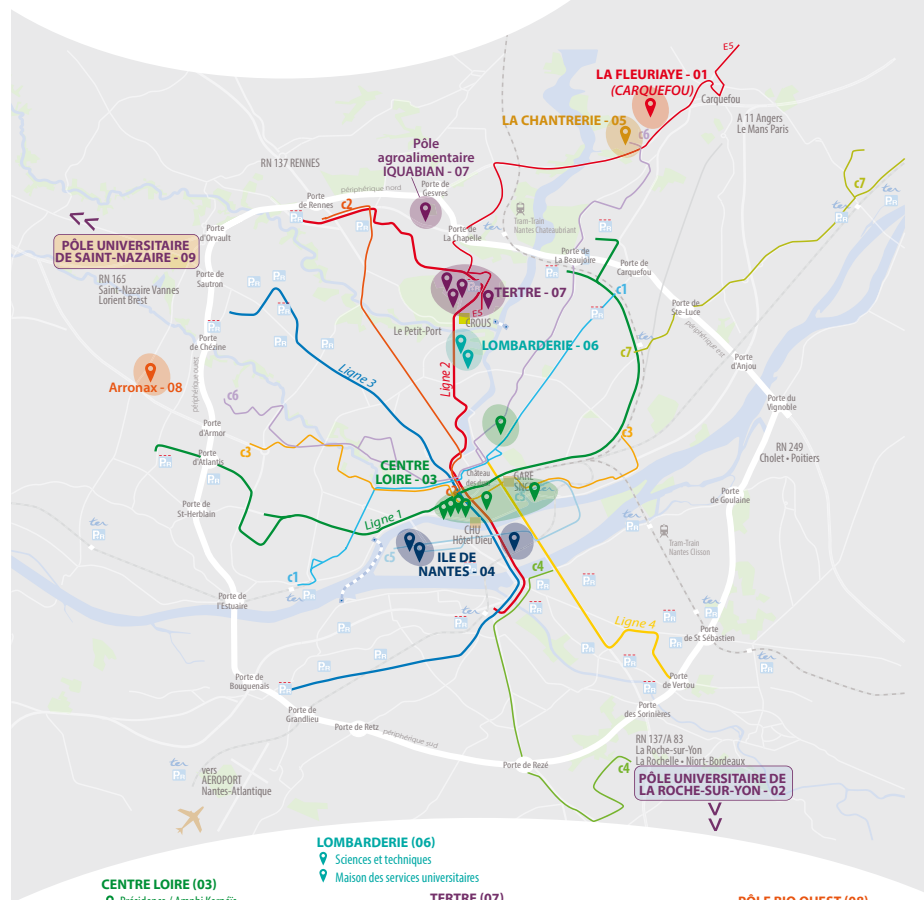
Introductory course unit [Unité d'enseignement découverte]

UFR

Training and research unit
Faculties are now called UFRs
Certain faculties have kept the name "faculty"



Campuses of the University in Nantes



- CENTRE LOIRE (03)**
- Présidence / Amphithéâtre
 - Médecine / Odontologie
 - Institut de recherche en santé (IRSUN)
 - Fondation de l'université
 - Pharmacie / BU Santé
 - Maison des échanges internationaux et de la francophonie (MEIF)
 - Maison des chercheurs étrangers
 - IUT de Nantes - site Joffre
 - Maison des sciences de l'homme (MSH)
 - Institut d'études avancées (IEA)
- ILE DE NANTES (04)**
- Formation continue / Université permanente / CFA / Espace Entreprises (Ateliers et Chantiers de Nantes)
 - Capacités SAS, filiale de l'Université de Nantes
 - IRS2 - Nantes biotech

- LOMBARDERIE (06)**
- Sciences et techniques
 - Maison des services universitaires

- TERTRE (07)**
- Lettres, langues, sciences humaines et sociales (LLSHS) : droit, éco, socio, psycho, histoire, géo, lettres, langues, Ipaq
 - École supérieure du professorat et de l'éducation (ESPE) : Launay-Violette
 - ESPE - Recteur Schmitt (siège académique)
 - Sport : Suaps - Staps
 - Pôle agroalimentaire (QUABIAN (4 rue de la Géraudière))

- LA CHANTRERIE (05)**
- Polytech Nantes : l'école polytechnique de l'Université de Nantes

- LA FLEURIAYE (01)**
- IUT de Nantes - site La Fleuriaye

- PÔLE BIO OUEST (08)**
- Cyclotron Aronax

- Tramway - ligne 1
 - Tramway - ligne 2
 - Tramway - ligne 3
 - Busway - ligne 4
 - Ligne express ES
- Lignes Chronobus
c1 - c2 - c3 - c4 - c5 - c6 - c7

Campus Centre Loire
Medicine - Dentistry - Pharmacy
University Foundation
Espace Entreprises
IUT of Nantes

Campus Île de Nantes
Site 04
Continuing Education
IRS2 and IRS Campus
Capacités

Sites universitaires Centre Loire

- Présidence de l'Université
- Faculté de Médecine et techniques médicales
- Direction de la qualité et du développement durable
- Amphi Kernéis - Faculté de Médecine
- Pôle Gestion et développement des compétences
- Faculté des Sciences pharmaceutiques et biologiques
- Bibliothèque universitaire - section Santé
- Faculté de Chirurgie dentaire (odontologie)
- Institut de recherche en santé de l'Université de Nantes (IRSUN)
- École de sages-femmes - Hôpital mère-enfant - Maternité
- Maison des échanges internationaux et de la francophonie (MEIF) - Maison des chercheurs étrangers
- Direction du plan, de l'immobilier et de la logistique
- Direction de la qualité et du développement durable
- École nationale supérieure maritime (ENSM)
- 38 rue Gabriel Péri - Nantes
- Institut d'études avancées (IEA) de Nantes
- Maison des Sciences de l'Homme (MSH) Ange Guépin
- Direction de la communication
- Direction de la recherche, des partenariats et de l'innovation - Service partenariat et innovation
- Fondation de projets de l'Université de Nantes
- 15 à 17 IUT de Nantes

Sites universitaires Île de Nantes

- Formation continue / Université permanente / CFA / (Ateliers et chantiers de Nantes)
- Capacités SAS, filiale de l'Université de Nantes (Bât. Atlantica)
- IRS 2 - Nantes biotech

Transportation:

- Tramway - ligne 1
- Tramway - ligne 2
- Tramway - ligne 3
- Busway - ligne 4
- Bus - ligne 26
- Chronobus - ligne C1
- Chronobus - ligne C2
- Chronobus - ligne C3
- Chronobus - ligne C5
- Chronobus - ligne C6

Tous les bâtiments universitaires sont couverts par le réseau wifi de l'Université de Nantes

Campus Tertre
Letter, Languages, Law, Economy,
Education (ESPE), Management,
Humanities and Social Sciences, Sports

Sites universitaires

- Château de Tertre
- Local technique
- Scolarité Lettres, langues, sciences humaines et sociales / Psychologie / Histoire, histoire de l'art et archéologie - Bât. Tertre
- Cafétéria Lettres
- Géographie et aménagement régional (IGARUN) Pôle audiovisuel multimédia (PAM)
- BU Lettres, sciences humaines et sociales
- Droit et sciences politiques / IPAG
- Langues et cultures étrangères
- Institut d'Economie et de Management de Nantes - IAE (IEMN - IAE) - Bât. Endre
- BU Droit, économie et gestion
- Pôle étudiant
- Lettres et langages - Bât. Censive
- Théâtre créateur
- IEMN-IAE / Créactiv - Bât. Petit-Port
- SUAPS (Service universitaire des activités physiques et sportives)
- 15, 17, 18 Granges 1 et 2, vestiaire
- 19, 20 UFR STAPS / Amphithéâtre
- ESPE (École supérieure du professorat et de l'éducation) (Site de Nantes - rue Launay-Violette)
- (bât. C0) Formation continue ESPE
- (bât. E0) Administration ESPE (siège académique)
- (bât. F0) Sociologie / Service Langues de l'Université de Nantes
- Accueil site
- Logements
- 26 Pavillons (1 à 10)

Renovation Work
Université de Nantes modernizes its Tertre campus.
You will be informed by your faculty which changes of classroom may occur during the renovation works.
Thank you for your understanding.

Transportation:

- Tramway - ligne 2
- Bus - ligne 20
- Bus - ligne 26
- Bus - ligne 66
- Bus - ligne 75
- Bus - ligne 80
- Bus - ligne 86
- Ligne express E5

Tous les bâtiments universitaires sont couverts par le réseau wifi de l'Université de Nantes


UNIVERSITÉ DE NANTES
Site 06

Campus Lombarderie
Sciences and Techniques
Maison des services universitaires

- Sites universitaires**
- Bât. administratif, Scolarité Amphis A, B, C, D, E
 - Bât. enseignement Amphi Pasteur
 - Recherche Physique
 - Recherche Géologie
 - TP Zoologie Botanique
 - TP Géologie
 - Serres
 - Recherche Zoologie Botanique
 - Recherche Biologie et Physicochimie cellulaire
 - Recherche Maths
 - LINA (Laboratoire informatique Nantes atlantique)
 - TP Chimie
 - TP Physique
 - Bât. Enseignement
 - Bât. Enseignement Informatique
 - Services Techniques
 - Data Center
 - BU Sciences, Technologies, Staps
 - Base d'Aviron
 - CEISAM
 - Comité des personnels (CPUN)
 - Centre F. Viète
 - Bât. Erdre (Enseignement)
 - ISOMER
 - Amphis F, G, H
 - Cafétéria
 - Imprimerie centrale
 - Institut des Matériaux
 - Microcaractérisation
 - LINA (Extension en projet)
 - Maison des services universitaires Orientation - Parcours - Métiers (SMIO) Mission Langues Médecine des étudiants (SUMPPS) Relais Handicap Médecine du personnel (MPPU)
 - 19, 20, 24, 33 Locaux techniques

- Tramway - ligne 2
- Autobus - ligne 23
- Autobus - ligne 70



Tous les bâtiments universitaires sont couverts par le réseau wifi de l'Université de Nantes


UNIVERSITÉ DE NANTES
Site 01

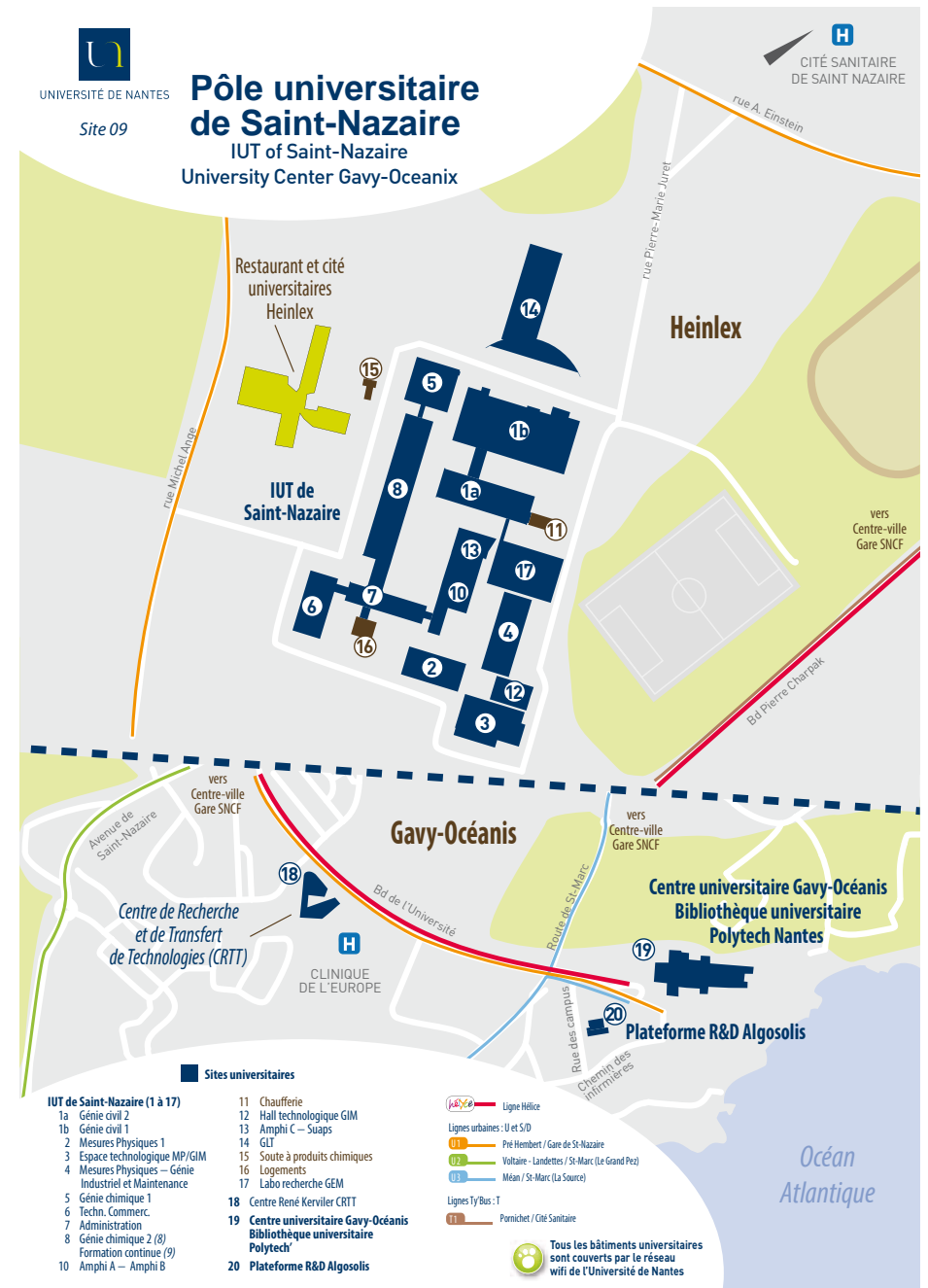
Campus La Fleuriaye
IUT of Nantes



- Sites universitaires**
- Campus La Fleuriaye**
- IUT de Nantes Centre de documentation
- Campus La Chantrerie**
- Polytech Nantes Bâtiment IRESTE
 - Polytech Nantes Bâtiment ISITEM
 - BU Technologies Institut de l'Homme et de la Technologie (IHT - Polytech Nantes)
 - Recherche ETMPA (énergie thermique, matériaux et procédés associés)

- Ligne Express E5
- Autobus - ligne 75
- Autobus - ligne 95
- Chronobus - ligne C6

Tous les bâtiments universitaires sont couverts par le réseau wifi de l'Université de Nantes



Layout
Office of Communications
International Relations Office

Photos credits
Photo Service Université de Nantes
Franck Tomps for Université de Nantes

Goubault Printing Services
Paper made from responsibly managed forests and plant inks

With the financial support of  **Région
PAYS DE LA LOIRE**

Join our community #univnantes on:



1st French university community on Twitter and Youtube

WWW.UNIV-NANTES.FR/ENGLISH



UNIVERSITÉ DE NANTES